

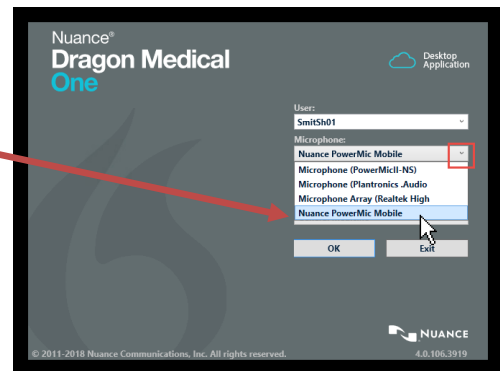
## Dragon - PowerMic Mobile Installation

1. Download the PowerMic Mobile app on your mobile device. PowerMic Mobile is a free app available in the App Store or Google Play.
2. Using your mobile device, open a web browser. Go to [www.rsfh.com/dmo](http://www.rsfh.com/dmo) and click on the appropriate link or type in the appropriate link below:



Apple Devices: `dmic://config_/?NmsToken=MjYwREQ4QkUtOEE0Mi00Rjc2LUJEMDktQjk4MDcxNDY0Njk1`  
 Android Devices: `http://config_/?NmsToken=MjYwREQ4QkUtOEE0Mi00Rjc2LUJEMDktQjk4MDcxNDY0Njk1`

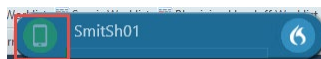
3. A prompt will appear to open PowerMic Mobile. Select "Open."
4. PowerMic Mobile will provide prompts for set up. Follow the prompts.
5. Log in to Cerner on the computer as you normally would.
6. On the Nuance Dragon Medical One login window, select PowerMic Mobile as the microphone.
7. Open the PowerMic Mobile app on your mobile device.
8. It will take a moment for your device to pair with your active Cerner session.
  - a. The Dragon icon on the toolbar will appear orange until your device is paired.



- b. Once pairing is complete, the icon will turn red.



9. The PowerMic Mobile app will display on your mobile device. Use the buttons on the screen to control DMO. When you select the microphone icon and can actively dictate using your mobile device, the icon will turn green.\*



10. \*Note – Expect a slight lag after pressing the microphone button. Watch for the icon on the PC screen to turn green, then wait a second or two before speaking.
11. If you are actively dictating, your mobile device will remain paired with your active Cerner session. If your phone locks, you will need to open up the PowerMic Mobile app and log back in before you can resume dictating.
12. If you tap out or log off of a computer and continue to dictate into PowerMic Mobile, your dictation may not be saved. It is not recommended to move about while dictating.
13. If you need to switch back to a wired microphone, click the flame icon on the DMO toolbar and select Log Off. Using the Nuance Dragon Medical One login window, select PowerMic II from the microphone list.